

N 89° 41' 05" E 2,634.70'M&R
N 89° 41' 05" E 1,317.35'M&R

2ND ST NW (NE 78TH AVE)
N 89° 52' 50" E 1,317.32'

Existing 40.00'
Roadway Easement
(Bk. 2299 Pg. 7)

N1/4 Corner
Sec. 36-80-23
Fnd Nail

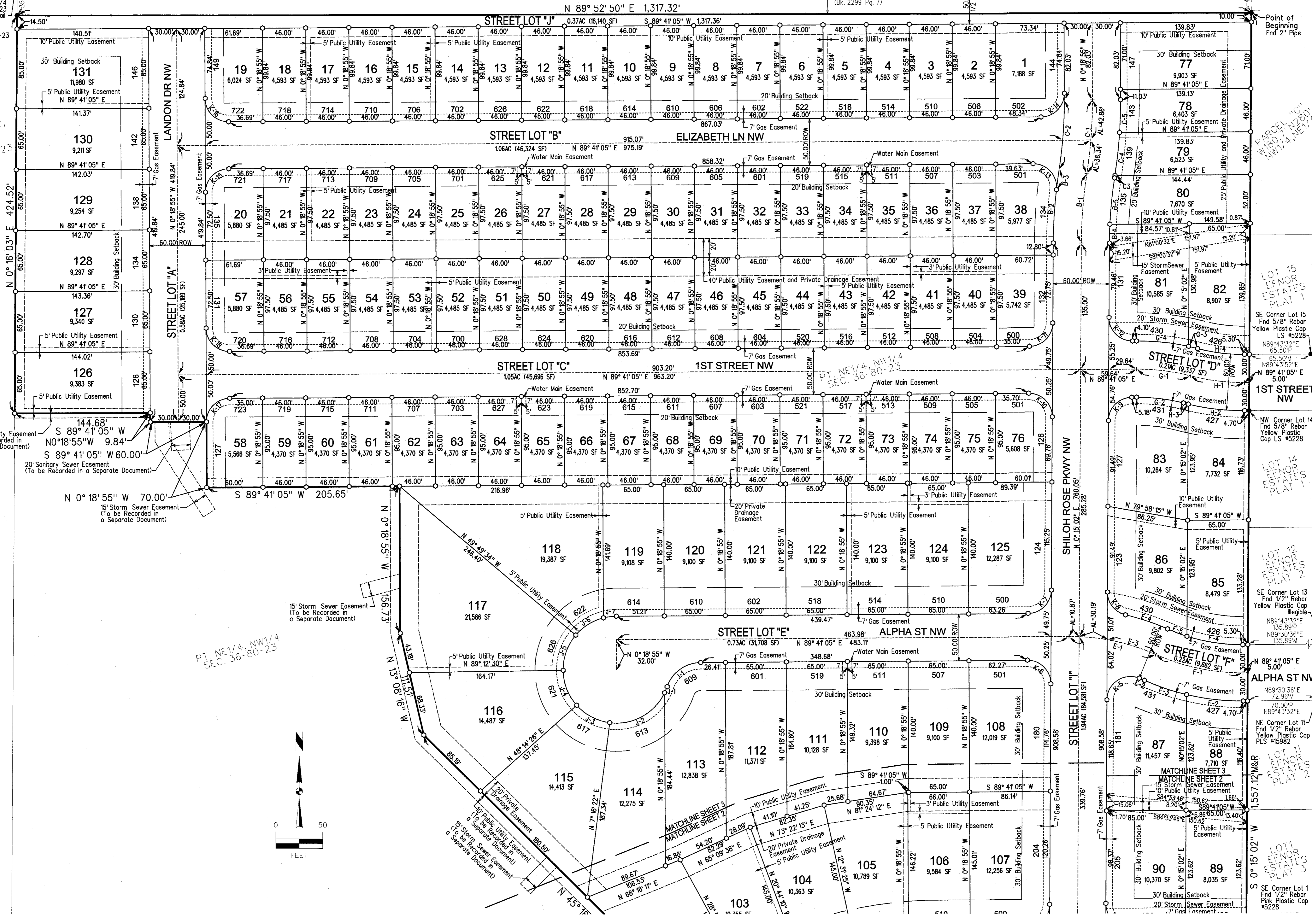
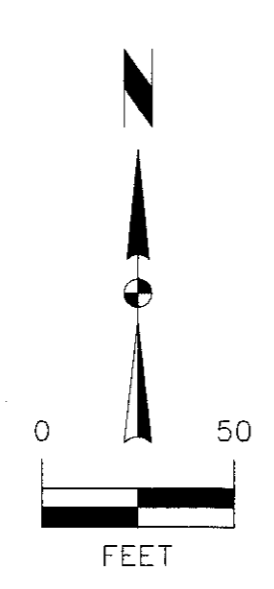
Point of Beginning
Fnd 2" Pipe

PT. NW1/4,
NW1/4
SEC. 36-80-23

PT. NE1/4, NW1/4
SEC. 36-80-23

PT. NE1/4, NW1/4
SEC. 36-80-23

N 0° 16' 03" E 2000.73' M&R



MARK	REVISION	DATE	BY
1	REVISED AS PER CITY COMMENTS	07/09/19	JWM
Engineer:	EDC	Checked By:	EDG
Technician:	JWM	Date:	12-13-18
Field Bk.:			
Project No.:	118.0175		
Sheet	2 of 3		

BONDURANT, IA

2727 S.W. SNYDER BLVD.
ANKENY, IOWA 50023
515-964-2020 | www.snyder-associates.com

QUAIL RUN PLAT 1

FINAL PLAT

SNYDER & ASSOCIATES, INC.

Project No: 118.0175

Sheet 2 of 3

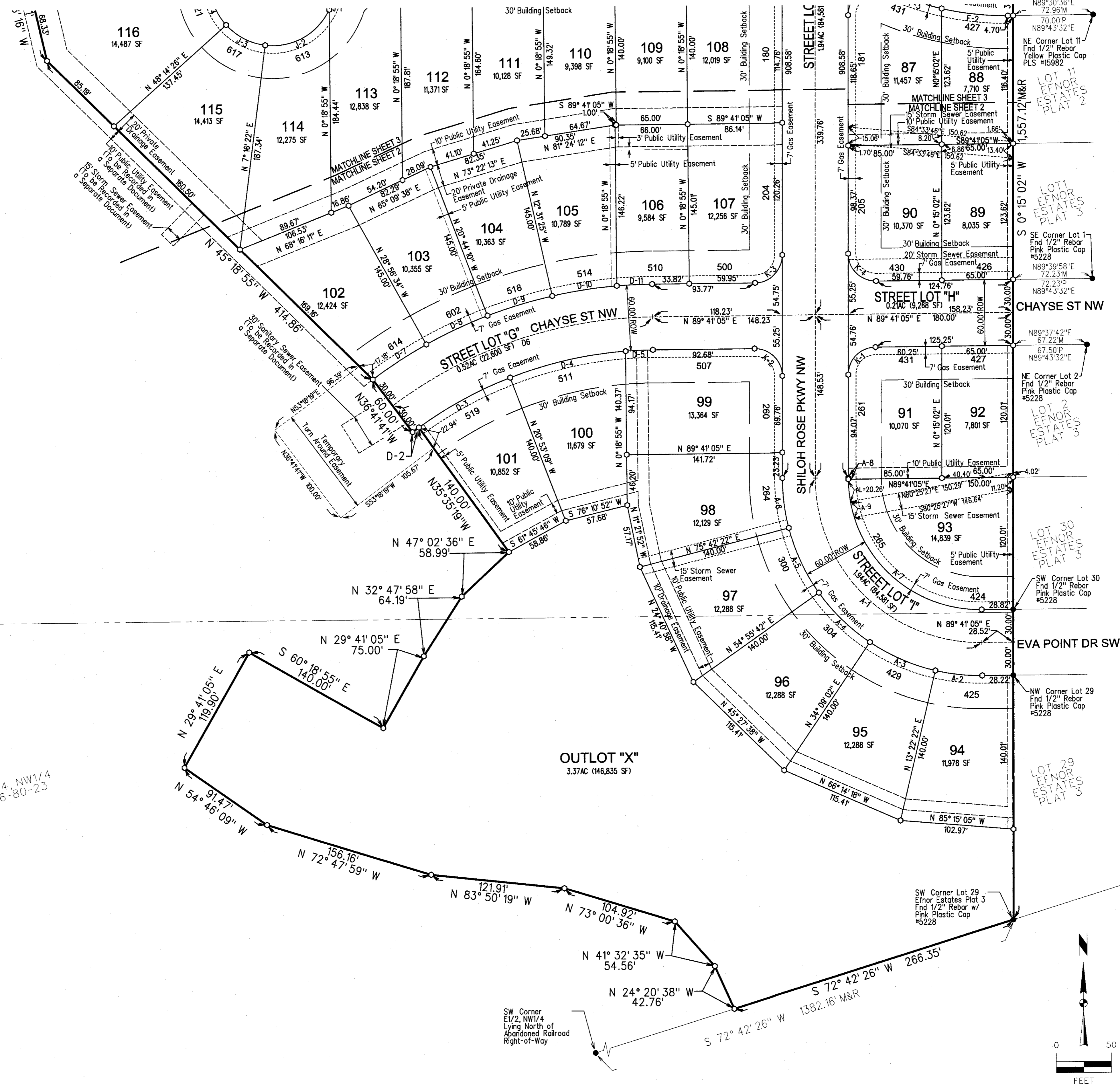
Y:\projects\118.0175\118.0175.dwg 7/16/2019 10:06:39 AM Snyder 1:50

N 0° 16' 03" E 2000.73' M&R

PT. NE 1/4, NW 1/4 SEC. 36-80-23

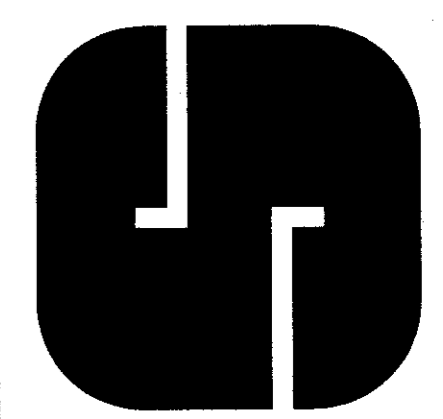
PT. SE 1/4, NW 1/4 SEC. 36-80-23

SW Corner E1/2, NW1/4 Lying North of Abandoned Railroad Right-of-Way



QUAIL RUN PLAT 1

FINAL PLAT



Project No: 118.0175
Sheet 3 of 3

BONDURANT, IA

SNYDER & ASSOCIATES, INC.

2727 S.W. SNYDER BLVD.
ANKENY, IOWA 50023
515-964-2020 | www.snyder-associates.com

MARK	REVISION	DATE	BY
1	REVISED AS PER CITY COMMENTS	07/09/19	JMM

Engineer:	EDC	Checked By:	EDG	Scale:	1" = 50'
Technician:	JWM	Date:	12-13-18	Field Bk:	

Project No: 118.0175
Sheet 3 of 3